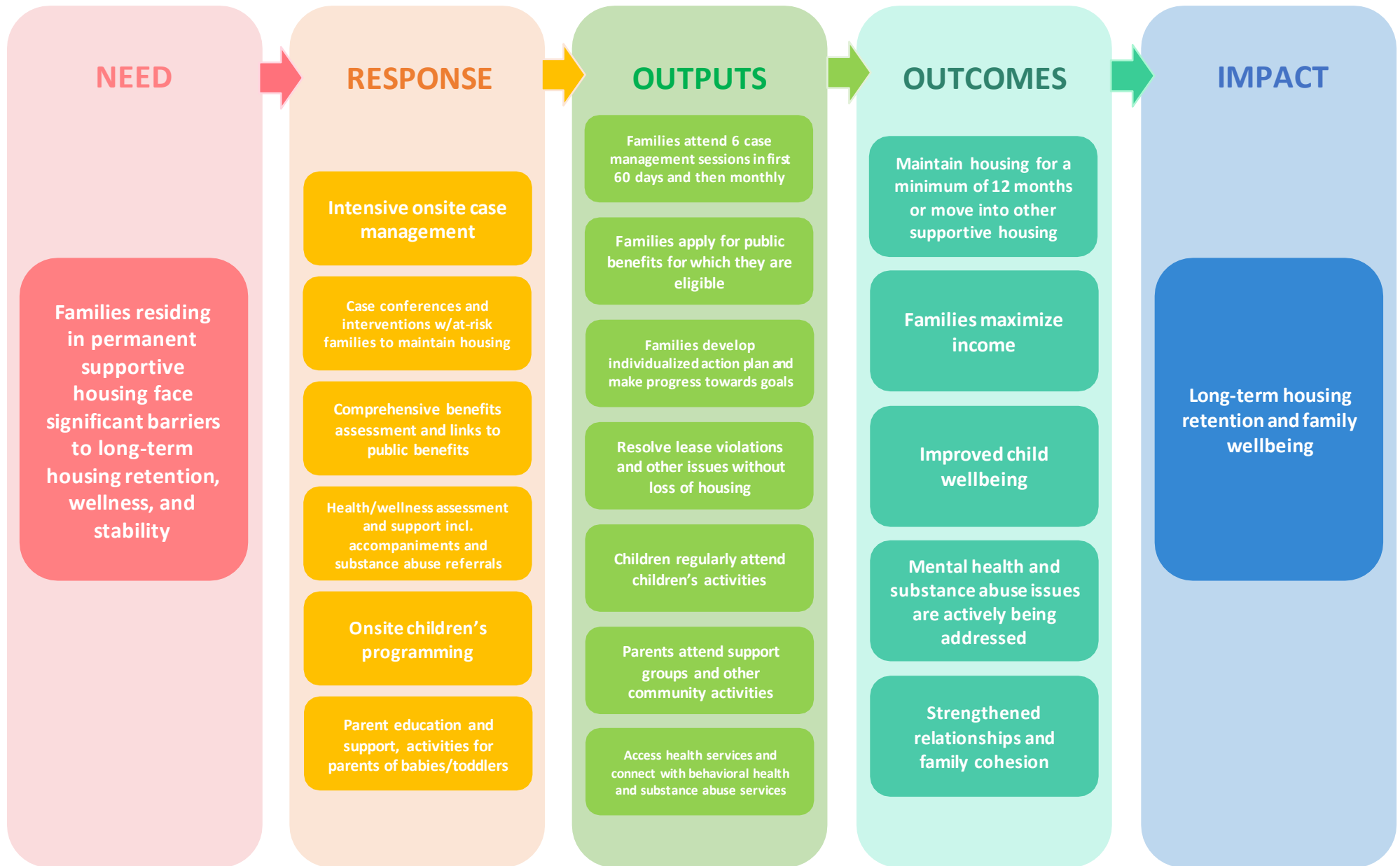


The Margot Program Model FY26

The Margot provides intensive support services to families with histories of homelessness and complex health issues who reside in permanent supportive housing at the Margot with the goal of long-term housing retention.



Key Outputs	Indicator	Measurement Tool(s)	Compass Target	Grant Requirement? <i>*indicates requirement is different from Compass target</i>
1. Families actively engage in program	CM attendance	CoDa: Service Entries	100% of new families attend 6 or more sessions, measured at 60 days after "Move-In Date"	HSH
	CM attendance	CoDa: Service Entries	80% of families meet with case managers monthly	
	CAC engagement	CoDa: Service Entries	70% of families engage with the CAC each year	HSH
	Participation in family groups/events	CoDa: Groups & Classes	80% of families participated in family groups/events	
2. Families receive benefits for which they are eligible	Completed goals	CoDa: Goal Tracker	100% of eligible families receive benefits	HSH
3. Families make progress in Family Action Plan	Completed goals	CoDa: Goal Tracker	80% of families complete at least one goal every quarter (for first year)	
4. Resolve lease violations without losing housing	Lease violation resolutions	CoDa: Violation Tracker	85% of lease violations resolved without loss of housing	HSH
5. Families have a positive experience at the Margot	Survey response rate	Annual Client Survey	75% response rate	HSH
	Overall experience with program		80% of respondents rate their experience VERY GOOD or EXCELLENT	HSH
	Feeling that cultural identity and background is respected		90% of respondents AGREE or STRONGLY AGREE	
	Feelings of safety at the Margot		75% of respondents AGREE or STRONGLY AGREE	

Key Outcomes	Indicator	Measurement Tool(s)	Compass Target	Grant Requirement? <i>*indicates requirement is different from Compass target</i>
6. Families maintain housing for 12 mos. or move to other permanent housing	Living Situation at 12 months after entry	CoDa: Housing Tracker + Program Status	<p style="text-align: center;">90%</p> of clients remain housed for 12 months after moving into the Margot or exit into another stable living situation	HSH
7. Families maintain or increase their income	Income after 1 year program	CoDa: Income Tracker	<p style="text-align: center;">60%</p> of clients maintain or increase their income after 1 year in program	HSH* - 100% by 6 months after "Move-In Date"
8. Improved child wellbeing	Changes to child wellbeing score in FAM	CoDa: FAM	<p style="text-align: center;">75%</p> of families improve or maintain	
9. Mental health and substance abuse issues are actively addressed	Changes to Substance Abuse score in FAM	CoDa: FAM	<p style="text-align: center;">75%</p> of families improve or maintain	
	Changes to Mental Health score in FAM		<p style="text-align: center;">75%</p> of families improve or maintain	
10. Strengthened relationships and family cohesion	Changes to Support Systems & Community score in FAM	CoDa: FAM	<p style="text-align: center;">75%</p> of families improve or maintain	
	Changes to CPS score in FAM		<p style="text-align: center;">75%</p> of families improve or maintain	

DETAILED PROGRAM MODEL

